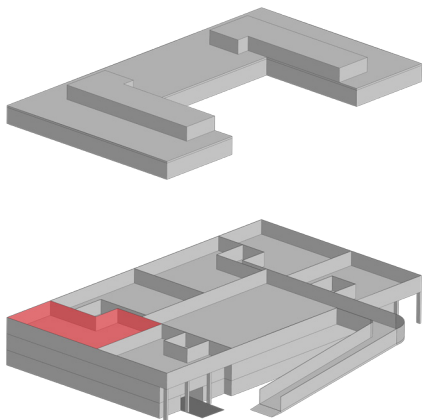
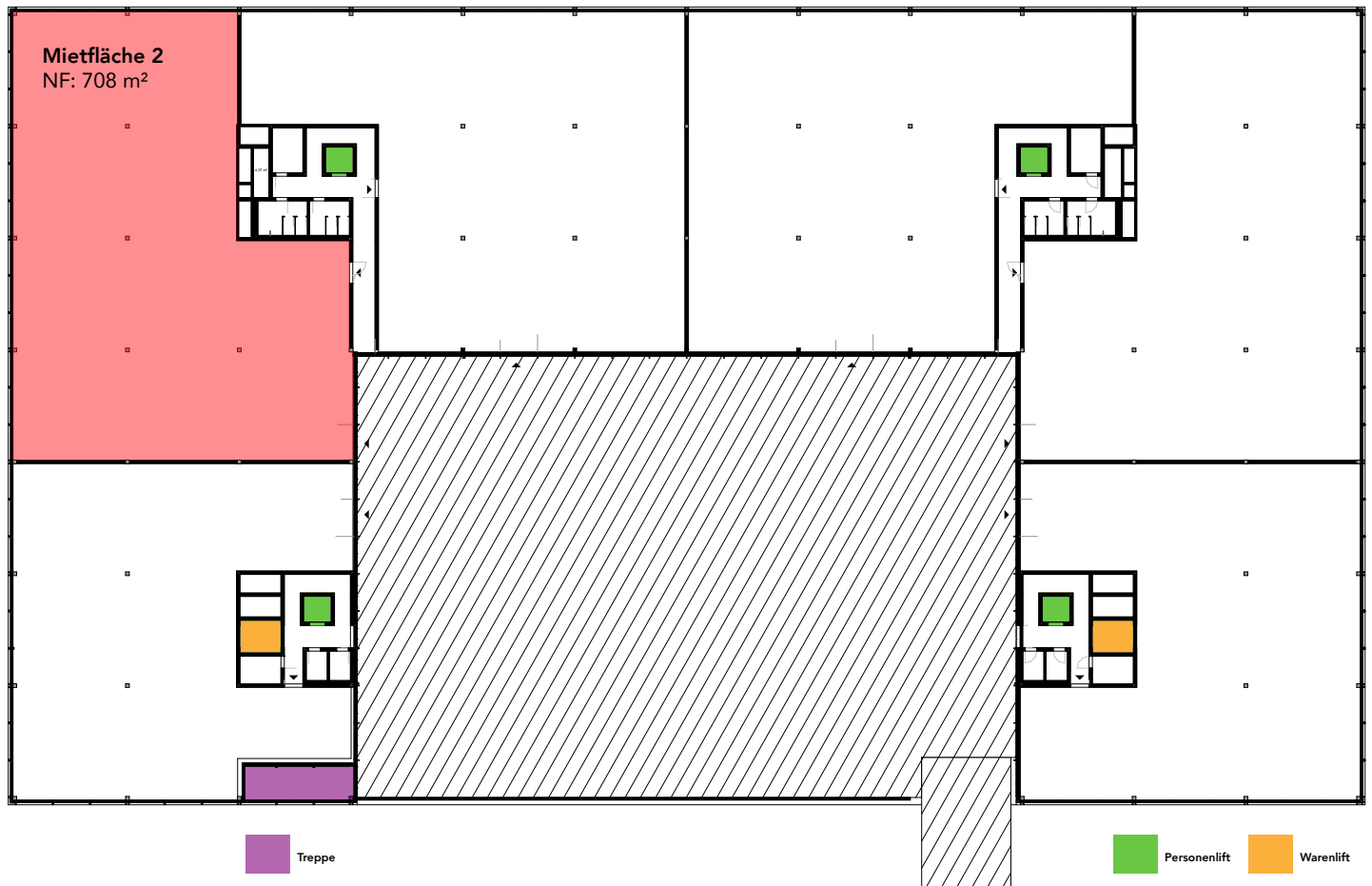


1. Obergeschoss



| Räumlichkeiten | Fläche (m ²) | Raumhöhe (m) | Traglast (kN/m ²) |
|----------------|--------------------------|--------------|-------------------------------|
| Mietfläche | 708 | 4.53 | 5.0 |
| Gewerbe 2 | | | |

www.birspark.ch

Adimmo AG
Engelgasse 12
Postfach
4002 Basel

+41 61 378 77 11
vermietung@birspark.ch